

Quick Connection Couplings Storz System for Liquids, Powders and Granulates

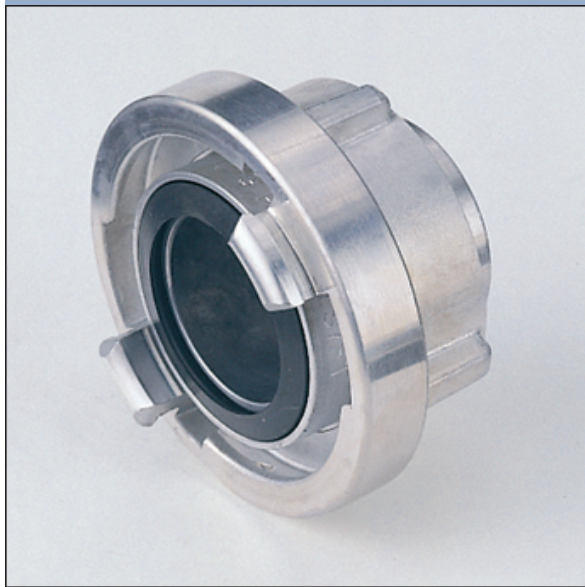
Symmetrical quick connection coupling, no female and male part, no problem with matching hose ends. Assembly and functionality of couplings Storz System.

Quick connection couplings with DS suffix generally are suitable for delivery and suction operation, without DS suffix for delivery operation only.

Working pressure is PN 16 if not mentioned otherwise.

- Aluminium alloys (A)
- Copper alloys (C)
- High grade steel (St)

Hose couplings for external binding



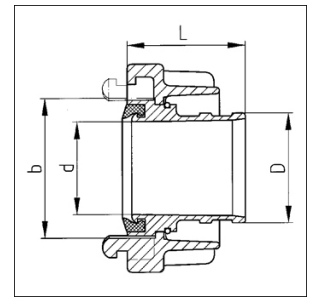
1000

1000 with tail pieces for delivery operation

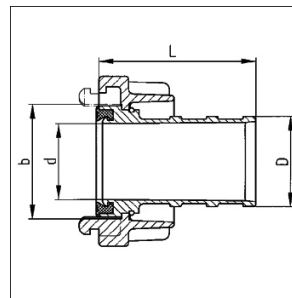
1001 with tail pieces for delivery and suction operation (DS)



1001



1000



1001

Nominal size	Lug spacing b (mm)	For hose i. d. (mm)	Length tail piece L (mm)	Inside dia. (mm)	Weight (kg)	Ident.No.	Remarks	Alloy
25=D-DS	31	13	53	8	0,085	60000433		A
25=D-DS	31	21/19 ¹⁾	50	16	0,090	60001033	multi serrated	A
25=D-DS	31	19	58	16	0,090	60306731	1 groove	A
25=D-DS	31	21/19 ¹⁾	50	16	0,270	60001093	multi serrated	A
25=D-DS	31	21/19 ¹⁾	50	16	0,270	60612293	PN 40	A

Nominal size	Lug spacing b (mm)	For hose i. d. (mm)	Length tail piece L (mm)	Inside dia. (mm)	Weight (kg)	Ident.No.	Remarks	Alloy
25=D-DS	31	25	53	18	0,090	40244433	DIN 14 301	A
25=D-DS	31	25	53	18	0,090	40244408	seal silicone	A
25=D-DS	31	25	53	18	0,090	60426633	seal white	A
25=D-DS	31	25	60	18	0,095	60246333	1 groove	A
25=D-DS	31	25	50	18	0,090	60326333	PN 40	A
25=D-DS	31	25	53	18	0,280	40244593		A
25=D-DS	31	25	53	18	0,280	40244599	PN 40	A
25=D-DS	31	25	53	18	0,250	40321046		A
25=D-DS	31	25	53	18	0,090	40244432	cast PN 10	A
32-DS	44	28/25 ¹⁾	65	20	0,120	60001933		A
32-DS	44	28/25 ¹⁾	65	20	0,360	60001993		A
32-DS	44	32	80	24	0,140	60008733		A
32-DS	44	32	80	24	0,395	60008793		A
38-DS	51	25	65	18	0,180	60197233		A
38-DS	51	25	65	18	0,530	60197293		A
38	51	25	90	18	0,680	60265093	PN 40	A
38-DS	51	35/32 ¹⁾	90	27	0,190	60002933		A
38-DS	51	38	90	30	0,210	60003333		A
38	51	38	90	30	0,700	60174593	PN 40	A
45-DS	59	45	72	37	0,220	60279233		A
52=C	66	19	42	13	0,380	60028333	tail 50° bent	A
52=C-DS	66	22/19 ¹⁾	90	15	0,350	60100333	multi serrated	A
52=C	66	25	41	18	0,380	60024033	tail 50° bent	A
52=C	66	25	41	18	1,025	60024093	tail 50° bent	A
52=C-DS	66	25	90	18	0,360	60005333		A
52=C-DS	66	25	90	18	0,360	60005332	cast PN 10	A
52=C-DS	66	25	90	18	0,900	60005393		A
52=C-DS	66	25	90	25	1,015	60483593	PN 40	A
52=C-DS	66	25	90	18	0,815	40426946		A
52=C	66	28	95	24	0,320	60005433		A
52=C	66	34/32 ¹⁾	90	25	0,380	60268433		A
52=C-DS	66	34/32 ¹⁾	90	25	0,400	60307333		A
52=C-DS	66	34/32 ¹⁾	90	25	0,400	60307332	cast PN 10	A
52=C-DS	66	34/32 ¹⁾	100	26	0,980	60110193		A
52=C-DS	66	32	90	26	0,845	60406546		A
52=C-DS	66	38	90	30	1,150	60107893	with earth screw	A
52=C-DS	66	38	90	31	0,370	60024333		A
52=C-DS	66	38	90	31	0,370	60024332	cast PN 10	A
52=C	66	38	90	31	0,375	60006733		A
52=C-DS	66	38	90	32	1,135	60024393		A
52=C-DS	66	38	90	32	0,800	40394846		A
52=C-DS	66	40	70	30	0,380	60569533		A
52=C	66	40	70	31	0,375	60007133	Swiss-Standard	A
52=C	66	42	55	36	0,335	40266233	DIN 14 332	A

Nominal size	Lug spacing b (mm)	For hose i. d. (mm)	Length tail piece L (mm)	Inside dia. (mm)	Weight (kg)	Ident.No.	Remarks	Alloy
52=C-DS	66	42	90	33	0,360	60100933		A
52=C-DS	66	42	90	33	0,360	60100932	cast PN 10	A
52=C-DS	66	42	90	33	0,965	60100993		A
52=C	66	45	68	38	0,355	60008233		A
52=C	66	45	90	37	0,370	60008333		A
52=C	66	45	90	37	0,900	60008393		A
52=C-DS	66	45	90	37	0,380	60016633		A
52=C-DS	66	45	90	37	0,380	60016632	cast PN 10	A
52=C-DS	66	50	90	42	0,380	60637733		A
52=C-DS	66	51	90	45	0,350	60556433	multi serrated	A
52=C	66	52	55	45	0,320	40244633	DIN 14 302	A
52=C	66	52	55	45	0,320	40244632	cast PN 10	A
52=C	66	52	75	45	0,970	40244793	DIN 86 202	A
52=C	66	52	75	45	0,980	60132693	with earth screw	A
52=C	66	52	90	45	0,350	60105233		A
52=C	66	52	90	45	1,095	60105293		A
52=C-DS	66	52	90	45	0,365	40245233	DIN 14 321	A
52=C-DS	66	52	90	45	0,355	60152232	cast PN 10	A
52=C-DS	66	52	90	45	0,335	60452933	seal silicone	A
52=C-DS	66	52	90	45	0,250	60152259	complete Polyamid PN 10	A
52=C-DS	66	62	90	45	0,925	60107793	with earth screw	A
52=C-DS	66	52	90	45	0,935	40245293		A
52=C-DS	66	52	90	45	1,060	60400193	PN 40	A
52=C-DS	66	52	90	45	0,750	40039446		A
52=C	66	55	70	44	0,350	60010333	Swiss-Standard	A
52=C-DS	66	55	120	44	0,410	60017233	Swiss-Standard	A
52=C-DS	66	60	90	50	0,385	60504333		A
65	81	38	90	28	0,450	60493333		A
65-DS	81	38	90	28	0,450	60335033		A
65-DS	81	38	90	28	1,430	60335093		A
65	81	52	60	45	0,450	60011333	NEN 3374	A
65	81	52	90	45	0,490	60011532	cast PN 10	A
65	81	52	90	45	0,490	60011533		A
65	81	52	90	45	1,380	60175893		A
65-DS	81	52	90	45	1,410	60461946		A
65-DS	81	63	100	55	1,450	60221493		A
65-DS	81	63,5	100	55	0,500	60541433		A
65	81	65	59	58	0,420	60011833	NEN 3374	A
65	81	65	59	58	1,265	60011893		A
65	81	65	100	55	0,475	60012133		A
65	81	65	100	55	0,475	60012132	cast PN 10	A
65-DS	81	65	100	55	0,505	60017333		A
65	81	65	100	55	0,505	60017332	cast PN 10	A

Nominal size	Lug spacing b (mm)	For hose i. d. (mm)	Length tail piece L (mm)	Inside dia. (mm)	Weight (kg)	Ident.No.	Remarks	Alloy
65-DS	81	65	90	58	1,200	60461846		A
65-DS	81	65	95	57	0,530	60651133	multi serrated	A
65	81	70	80	58	0,550	60012233		A
65-DS	81	70	95	58	0,590	60498033		A
65	81	75	65	58	0,410	60012433	NEN 3374	A
65	81	75	100	58	0,520	60012833		A
65	81	75	100	58	0,520	60012832	cast PN 10	A
75=B-DS	89	52	125	44	0,700	40379233		A
75=B	89	65	80	65	0,550	60013633		A
75=B-DS	89	65	125	55	0,715	60017533		A
75=B-DS	89	65	125	55	0,715	60017532	cast PN 10	A
75=B-DS	89	65	125	55	0,705	60017508	seal silicone	A
75=B-DS	89	65	125	55	1,945	60017593		A
75=B-DS	89	65	125	58	1,650	40408846		A
75=B	89	70	75	60	0,550	60014033		A
75=B	89	70	125	60	0,700	60452033		A
75=B-DS	89	70	125	60	0,720	60017633		A
75=B	89	75	60	65	0,560	40244833	DIN 14 303	A
75=B	89	75	60	65	0,560	40244832	cast PN 10	A
75=B	89	75	80	65	1,410	40244993	DIN 86 203	A
75=B	89	75	80	65	1,430	60151393	with earth screw	A
75=B	89	75	83	65	0,600	60014733	Swiss-Standard	A
75=B	89	75	125	65	0,670	60014833		A
75=B-DS	89	75	125	65	0,710	40245933	DIN 14 322	A
75=B-DS	89	75	125	65	0,670	60316432	cast PN 10	A
75=B-DS	89	75	125	65	0,700	60462633	seal silicone	A
75=B-DS	89	75	125	65	1,395	60172844	tail pc. steel ²⁾	A
75=B-DS	89	75	125	65	1,865	40245993		A
75=B-DS	89	75	105	67	1,580	40039546		A
75=B-DS	89	76	125	65	0,730	60556533	multi serrated	A
75=B-DS	89	80	125	65	0,730	60017933		A
75=B-DS	89	80	125	65	0,730	60017932	cast PN 10	A
75=B-DS	89	80	125	65	1,770	60017944	tail pc. steel ²⁾	A
75=B-DS	89	80	105	65	1,400	40410046		A
90-DS	105	75	140	65	0,965	60018333		A
90-DS	105	90	140	80	0,970	60018433		A
100	115	101	84	90	0,950	60015133		A
100-DS	115	101	150	90	1,230	60018533		A
110=A-DS	133	90	170	80	1,600	60015333		A
110=A-DS	133	100	170	90	1,630	60015533		A
110=A-DS	133	100	170	90	1,695	60015532	cast PN 10	A
110=A-DS	133	100	170	90	1,600	60461733	seal silicone	A
110=A-DS	133	100	170	90	2,960	30350844	tail pc. steel ²⁾	A
110=A-DS	133	100	170	90	4,350	60015593	cast PN 10	A

Nominal size	Lug spacing b (mm)	For hose i. d. (mm)	Length tail piece L (mm)	Inside dia. (mm)	Weight (kg)	Ident.No.	Remarks	Alloy
110=A-DS	133	100	170	90	3,550	30228546		A
110=A-DS	133	101	130	90	1,480	60015633		A
110=A-DS	133	102	170	90	1,700	60556633	multi serrated	A
110=A-DS	133	110	115	100	1,445	40245033		A
110=A-DS	133	110	170	100	1,660	40246333	DIN 14 323	A
110=A-DS	133	110	170	100	1,650	60306832	cast PN 10	A
110=A-DS	133	110	170	100	5,000	40246393	cast PN 10	A
110=A-DS	133	110	170	102	3,300	30235346		A
110=A-DS	133	125	200	100	1,900	60019033		A
125-DS	148	125	197	113	2,300	60018733		A
125-DS	148	125	197	113	5,320	60018746		A
125-DS	148	125	220	113	7,300	60019193	cast PN 10	A
135-DS	159	135	250	124	2,565	60019533	cast PN 10	A
150-DS	160	150	180	130	2,700	60359033	3 lugs	A
150-DS	160	150	180	130	8,000	60359095	3 lugs, cast PN 10	A
150-DS	160	150	180	130	7,430	60430646	3 lugs	A
150-DS	160	152	180	130	3,600	60665133	3 lugs, multi serrated	A
165-DS	188	152	275	138	3,900	60019833	cast PN 10	A
205-DS	220	205	375	183	6,800	60020133	cast PN 10	A
205-DS	220	205	375	183	6,800	60588733	Jumbo Storz 8", 3 lugs	A
250	278	260	400	242	12,400	60668833	Jumbo Storz 10", 3 lugs	A
305	316	305	425	280	14,900	60668933	Jumbo Storz 12", 3 lugs	A