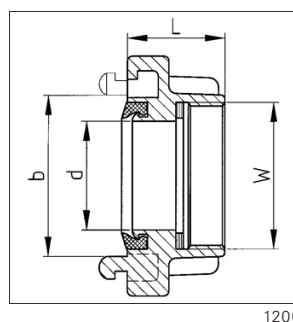
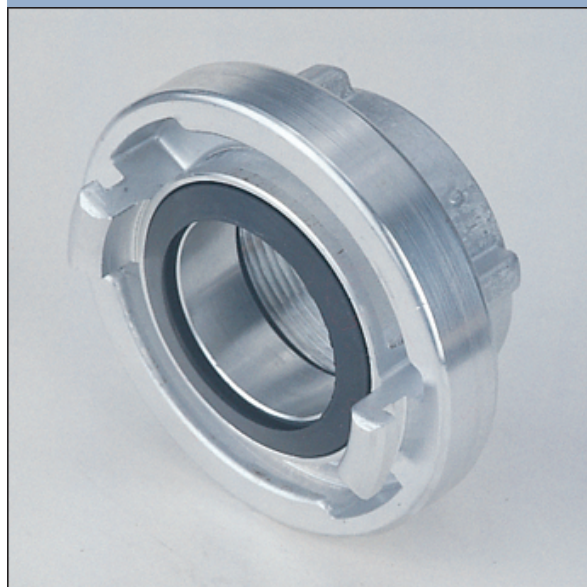


Adapters

- Aluminium alloys (A)
- Copper alloys (C)
- High grade steel (St)

Adapters with female thread



1200

Nominal size	Lug spacing b (mm)	Inside dia. d (mm)	Female thread W	Face-to-face length L (mm)	Weight (kg)	Ident.No.	Remarks	Alloy
25=D-DS	31	18	G ½	30	0,060	40170231		A
25=D-DS	31	18	G ½	30	0,210	40170291		A
25=D-DS	31	18	G ¾	30	0,080	40170431		A
25=D-DS	31	18	G ¾	30	0,235	40120491		A
25=D-DS	31	18	G 1	30	0,080	40170531	DIN 14 306	A
25=D-DS	31	18	G 1	30	0,080	40170508	seal silicone	A
25=D-DS	31	18	G 1	30	0,080	60462931	seal white	A
25=D-DS	31	18	G 1	30	0,075	40170533	PN 40	A
25=D-DS	31	18	G 1	30	0,220	40170591		A
25=D-DS	31	18	G 1	30	0,225	40170593	PN 40	A
25=D-DS	31	18	G 1	29	0,220	50251346		A
25=D-DS	31	18	G 1	30	0,080	40170532	cast PN 10	A
25=D-DS	31	18	G 1 ¼	30	0,085	40170631		A
25=D-DS	31	18	RD 32 x 1/8"	41	0,235	40480191	for mining	A
32-DS	44	25	G 1	32	0,110	30166531		A
32-DS	44	25	G 1	32	0,320	30166591		A
32-DS	44	25	G 1 ¼	32	0,120	30195531		A
32-DS	44	25	G 1 ¼	32	0,340	30195591		A
38-DS	51	32	G 1 ¼	35	0,140	30166931		A

Nominal size	Lug spacing b (mm)	Inside dia. d (mm)	Female thread W	Face-to-face length L (mm)	Weight (kg)	Ident-No.	Remarks	Alloy
38-DS	51	32	G 1¼	35	0,410	30166991		A
38	51	32	G 1 ½	35	0,155	50035131		A
38	51	32	G 1 ½	35	0,525	50035191	PN 40	A
38-DS	51	32	G 2	37	0,175	40270831		A
38-DS	51	32	G 2	37	0,535	40270891		A
45-DS	59	38	G 1½	36	0,200	50035031		A
45-DS	59	38	G 2	39	0,300	50090131		A
52=C	66	24	G ¾	36	0,280	40251131		A
52=C	66	25	G 1	36	0,235	40126731		A
52=C	66	25	G 1	36	0,640	40126791		A
52=C-DS	66	25	G 1	36	0,240	40461131	seal silicone	A
52=C-DS	66	24	G 1	40	1,210	40465846		A
52=C	66	32	G 1¼	32	0,250	40009231		A
52=C	66	32	G 1¼	32	0,590	40009291		A
52=C-DS	66	32	G 1¼	32	0,240	40289831		A
52=C-DS	66	32	G 1¼	37	0,900	40416446		A
52=C	66	40	G 1½	32	0,230	40251331		A
52=C	66	40	G 1½	32	0,240	40251332	cast PN 10	A
52=C	66	40	G 1½	32	0,650	40251391		A
52=C-DS	66	40	G 1½	32	0,240	40269031		A
52=C-DS	66	40	G 1½	37	0,850	40409546		A
52=C	66	44	G 2	40	0,260	30000131	DIN 14 307	A
52=C	66	44	G 2	40	0,250	60308132	cast PN 10	A
52=C	66	44	G 2	40	0,795	30162491	DIN 86 204	A
52=C-DS	66	44	G 2	40	0,280	30173831		A
52=C-DS	66	44	G 2	40	0,270	60416731	seal silicone	A
52=C-DS	66	44	G 2	40	0,630	30173991		A
52=C-DS	66	45	G 2	35	0,600	40028746		A
52=C	66	44	G 2½	37	0,270	40251731		A
52=C-DS	66	44	G 2½	37	0,280	40402431		A
52=C	66	44	G 2½	37	0,800	40251791		A
52=C	66	21	RD 32 x 1/8"	50	0,850	50200391	for mining	A
52=C	66	22	RD 37 x 1/8"	35	0,695	50380591	for mining	A
65	81	38	G 1½	45	0,435	60118133		A
65	81	45	G 2	37	0,360	40252231		A
65	81	50	G 2	46	1,000	40122991		A
65-DS	81	45	G 2	49	0,350	40399131		A
65-DS	81	50	G 2	35	1,165	60462346		A
65	81	58	G 2½	52	0,355	30055431	NEN 33 74	A
65	81	58	G 2½	52	1,090	30055491		A
65-DS	81	58	G 2½	52	0,380	30198531		A
65-DS	81	58	G 2½	37	0,790	30360346		A
65	81	58	G 3	70	0,560	60108233		A
65-DS	81	58	G 3	70	0,560	60358033		A

Nominal size	Lug spacing b (mm)	Inside dia. d (mm)	Female thread W	Face-to-face length L (mm)	Weight (kg)	Ident-No.	Remarks	Alloy
65	81	58	G 3	70	1,200	40152992		A
65-DS	81	58	5 1/5 TPI	43	0,420	40205431		A
65-DS	81	58	5 1/5 TPI	43	1,130	40205491		A
75=B	89	50	G 2	38	0,440	40131531		A
75=B	89	50	G 2	38	1,310	40131591		A
75=B-DS	89	65	G 2	65	1,550	60472646		A
75=B	89	65	G 2½	42	0,415	30000631	DIN 14 308	A
75=B	89	65	G 2½	42	0,385	60308232	cast PN 10	A
75=B	89	65	G 2½	40	1,310	30162591	DIN 86205	A
75=B-DS	89	65	G 2½	42	0,410	30174031		A
75=B-DS	89	65	G 2 ½	42	0,410	60469631	seal silicone	A
75=B-DS	89	65	G 2½	37	1,200	40029946		A
75=B	89	65	G 3	39	0,425	40120031		A
75=B	89	65	G 3	39	0,425	40120032	cast PN 10	A
75=B	89	65	G 3	39	1,250	40120091		A
75=B-DS	89	65	G 3	39	0,385	40279431		A
75=B-DS	89	65	G 3	39	0,425	60438931	seal silicone	A
75=B-DS	89	65	G 3	39	0,450	40429144	steel insert ¹⁾	A
75=B-DS	89	64	G 3	37	0,950	40409346		A
75=B	89	64	TR105x6	39	0,420	60529733	MSZ 1057 Hungarian Standard	A
90-DS	105	78	G 3	40	0,540	30093031		A
100	115	89	G 4	47	0,760	30174531		A
100	115	89	G 4	45	2,700	40075895	cast PN 10	A
100-DS	115	89	G 4	47	0,780	60538207		A
100-DS	115	89	G 4	47	1,750	60418646		A
100	115	89,5	G 5	48	1,040	30285031		A
110=A-DS	133	100	G 4	48	1,000	20097031		A
110=A-DS	133	100	G 4	48	1,000	20097032	cast PN 10	A
110=A-DS	133	100	G 4	48	1,100	60462231	seal silicone	A
110=A-DS	133	100	G 4	48	1,470	40434644	steel insert ¹⁾	A
110=A-DS	133	100	G 4	45	2,530	40112995	cast PN 10	A
110=A-DS	133	100	G 4	47	2,385	40324746		A
110=A-DS	133	100	G 4½	48	1,000	20097132	cast PN 10	A
110=A-DS	133	100	G 4½	48	1,090	20097131	DIN 14 309	A
110=A-DS	133	100	G 4½	45	3,600	40073895	cast PN 10	A
110=A-DS	133	100	G 4½	47	2,300	40158446		A
110=A-DS	133	100	G 5	79	1,650	60021533		A
125	148	100	G 4	60	1,800	30285431		A
125-DS	148	100	G 4	60	1,400	30175231		A
125	148	115	G 5	52	1,400	30221831		A
125-DS	148	115	G 5	52	1,430	30111431		A
125-DS	148	115	G 5	68	4,000	30174992	cast PN 10	A

Nominal size	Lug spacing b (mm)	Inside dia. d (mm)	Female thread W	Face-to-face length L (mm)	Weight (kg)	Ident.No.	Remarks	Alloy
125-DS	148	115	G 5	68	3,095	60419846		A
135-DS	159	124	G 5½	55	2,000	30045732	cast PN 10	A
150-DS	160	130	G 6	57	1,750	30175431	3 lugs	A
150-DS	160	130	G 6	57	8,800	30175495	3 lugs, cast PN 10	A
150-DS	160	130	G 6	57	5,590	60430546	3 lugs	A
165-DS	188	150	G 6	64	3,000	20098332	cast PN 10	A
165-DS	188	150	G 7	64	3,130	20027132	cast PN 10	A
205-DS	220	186	G 8	75	4,230	20028632	cast PN 10	A
205-DS	220	186	G 8	75	4,230	10074132	Jumbo Storz, 3 lugs	A
250-DS	278	236	G 10	78	6,600	10029532	Jumbo Storz, 3 lugs	A
305	316	280	G12	88	11,400	10077532	Jumbo Storz, 3 lugs	A

Adapters Storz System with NH/NPT/NPSH/QST North-American Standard, page 102/103.